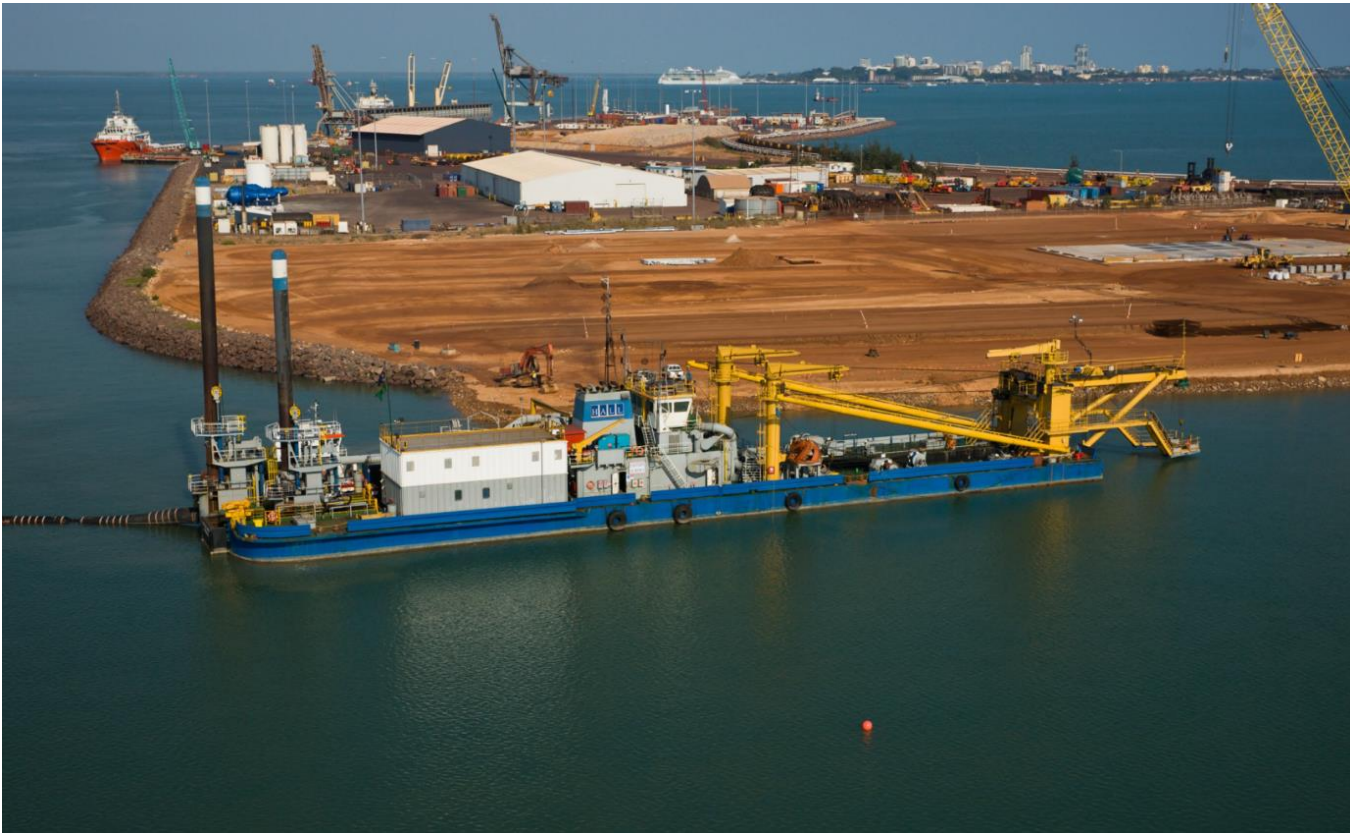


Eastern Aurora
IHC Cutter Suction Dredge
(1994-Rebuild 2011 Class GL)



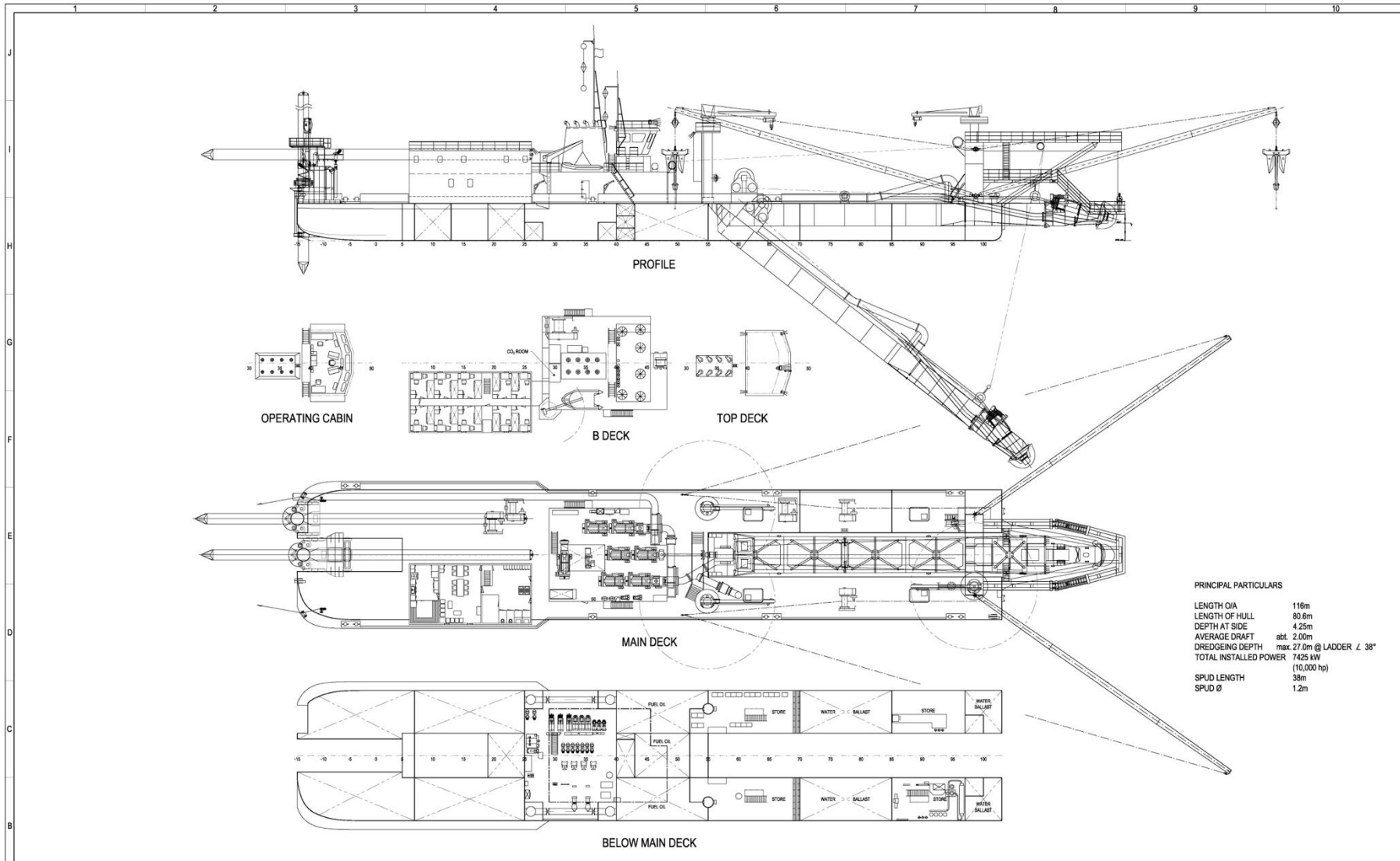
Specifications

Power	7,426kW Total Installed	Length Overall	116m
Ladder Pump	IHC 1,752kW	Hull Length	80.6m
Deck Pumps x 2	IHC 3,816kW	Beam	14.9m
Cutter	1107kW		
Pipe	700mm dia. Suction 750mm dia. Delivery		
Cutter Drive	Caterpillar 3512		
Dredging Parameters	27m @ 38 degrees		
Maximum Pumping Distance	7,000m (sand and silty materials)		
Anchors	2—Anchor Booms plus spud carriage		

Eastern Aurora

IHC Cutter Suction Dredge

(1994-Rebuild 2011 Class GL)



PRINCIPAL PARTICULARS

LENGTH O/A	116m
LENGTH OF HULL	80.6m
DEPTH AT SIDE	4.25m
AVERAGE DRAFT	abt. 2.00m
DREDGING DEPTH	max 27.0m @ LADDER \angle 38°
TOTAL INSTALLED POWER	7425 kW (10,000 hp)
SPUD LENGTH	38m
SPUD Ø	1.2m

This is a CAD produced drawing - no manual modifications are to be made. DO NOT SCALE FROM THIS DRAWING - If in doubt ASK.
 This drawing is the property of ASD Marine Consultants Pty Ltd and must not be copied or the contents thereof or any information revealed in conjunction therewith be imparted to any 3rd party. It must not be used for any other contract and the receipt of this drawing implies that these conditions as stated are accepted.

REV	DATE	DESCRIPTION	DWN BY	END BY	CHK BY	APP BY
1	12-08-2011	PLATFORM & LADDER ARRANGEMENT UPDATED	GH	-	CB	CB
2	04-03-2011	ANCHOR ROOM UPDATED	GH	-	CB	CB
3	02-03-2011	WINCH PEDESTAL ADDED TO LADDER	GH	-	CB	CB
4	10-01-2011	ISSUED FOR INFORMATION	GH	-	CB	CB
5	07-01-2011	ISSUED FOR INFORMATION	GH	-	CB	CB
6	06-01-2011	ISSUED FOR COMMENT	GH	-	CB	CB

ASO
 ASD Marine Consultants Pty Ltd
 78 Victoria Ave
 Chatswood NSW 2067
 (Ph) Fax: (02) 9559 0568
 ph: +61 2 9552 3844
 fax: +61 2 9552 3264
 web: www.asmarine.com.au
 email: info@asmarine.com.au

PROJECT:	HALL CONTRACTING PTY LTD
TITLE:	EASTERN AURORA CUTTER SUCTION DREDGE GENERAL ARRANGEMENT
SCALE:	1:200
CAD REF:	
DRAWING No.:	1043-1011-001
SHEET:	1 OF 1
REV:	5

ORIG. DRG. SIZE: A1